

# EMMANUEL LUTHERAN SCHOOL

LUTHERAN CHURCH MISSOURI SYNOD

520 WEST ONE STREET, KAHULUI, HI 96732

WEBSITE: ELS-MAUI.ORG



Issue 20

January 11, 2012

## VERSE OF THE WEEK

The Lord is near to all who call upon Him.  
Psalm 145:18

## NOTES FROM THE PRINCIPAL

Sometimes when we ask a person for help, we receive a less than enthusiastic response. Sometimes our plea may even be totally disregarded. But we know that this never happens when we go to God in prayer. We may not always feel that God is listening, but the Bible tells us that He is. He cares and He will respond. Sometimes He answers "Yes", sometimes He answers "No", and sometimes He answers "Not now", but He does always answer. When we call out to Him, He draws close to us. An old saying reminds us "When you feel far away from God, guess who moved?" God is always ready to close the gap between Himself and His children. As you face the challenges that come each day, remember another saying, "You'll never get a busy signal on the prayer line to heaven." So call out to God; He is near!

*Financial Aid applications for 2012-2013 can be submitted to FACTS now. The first grants will be announced April 16.*  
[www.factstuitionaid.com](http://www.factstuitionaid.com)

## DATES TO REMEMBER

- Jan.11 Report Cards Sent Home
- Jan.13 Early Dismissal 11:00am
- Jan.16 Martin Luther King Jr. Day  
NO SCHOOL - NO E+
- Jan.20 Fitness Fest
- Jan.21 Open House for NEW  
Families for Next Year 1:00
- Jan.28 Band Rummage Sale
- Feb. 2-3 Teachers Conference on  
Oahu NO SCHOOL - NO E+
- Feb.8 Mid-term Reports Gr.6-8
- Feb.8-10 Gr.5 Outdoor Education
- Feb.10 Early Dismissal 11:00am
- Feb.16 Kindergarten Open House  
for New Families for Next Year
- Feb.20 Presidents Day  
No school - No E+
- Feb.21 Flatbread Pizza Fundraiser  
for our Band

## CHAPEL OFFERINGS

Our second semester chapel offerings will be given to help support the work of a Lutheran missionary. We just received word that Rev. and Mrs. Kaye are back on the mainland and are not scheduled to return to Thailand. They have not been assigned to a new location yet. Therefore we will be choosing another missionary family to support. Watch for more information to come!

**January tuition is due.**

**EARLY DISMISSAL THIS FRIDAY, JAN. 13 11:00**  
**NO SCHOOL - NO E+ THIS MONDAY, JAN.16**

## GRADES 6-7-8 PARTY

**FRIDAY, JANUARY 13 7-9PM**

All of our middle school students are invited to our party/dance this Friday. **PARENTS:** Please make sure you are here AT 9:00 to pick-up your child. (Do not wait for a phone call.)

## 2012-2013 SCHOOL YEAR

Re-registration Forms for returning students are available in the office. Returning students and siblings have priority placement **through Friday, January 27.** Enrollment opens to new families on Monday, January 23, 2012. New students will be placed in classes starting on Mon, Jan.30.

## ELS SPELLING BEE

Last week we held our Grades 4-8 Spelling Bee. **Congratulations** to all who qualified for the school Spelling Bee: Laura Dodson, Sophia Domingo, Emma Fosbinder, Kaylie Ho, Brynn Kubo, Marea Lee, Andrew Teoh, Jessica Vanni, Ameera Waterford, and Madeline Williams! Our champions are **Andrew** (1st) and **Ameera** (2nd). They will represent us at the Maui County Spelling Bee on February 2. Way to go!

## SPREAD THE WORD ABOUT ELS!

Please invite family and friends who might like to send their children to ELS to our **OPEN HOUSE FOR NEW FAMILIES** on Sat., Jan.21 1-3pm

## NOTE FROM OUR NURSE VOLUNTEER

Our student health records have been audited and all students are in compliance with state regulations. Thank you!

## FITNESS FEST 2012 FRIDAY, JANUARY 20

Can you help us during this fun event? Remember it will be held at the Maui High School track this year. Contact Mr. Bediamol if you can help.

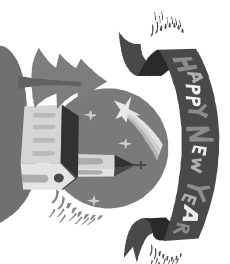
## THOUGHT FOR THE WEEK

*Really great people make you feel  
that you, too, can be great.*

*Mark Twain*

# JANUARY 2012

## EMMANUEL LUTHERAN

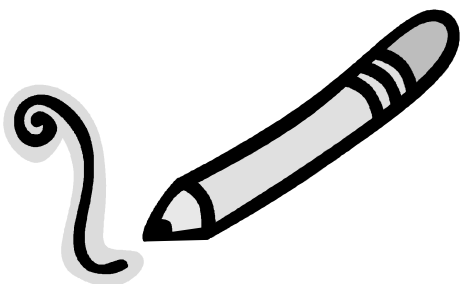


**JANUARY'S VENDOR**  
 Bentos and Banquets by Bernard  
*Thursday Pizza by Pizza In Paradise*  
 Lunch ticket \$4.75  
 Booklet of 5: \$23.00

	Mon	Tue	Wed	Thu	Fri	
	2 NO SCHOOL	3 Chow Fun Shoyu Chicken Fruit	4 Baked Teri Chicken Veggies Rice Fruit	5 Pepperoni Pizza Pineapple	6 Kalua Pig Rice Veggies	
	9 Mac & Cheese Cold Cuts Fruit	10 Spaghetti Garlic Bread Veggies Fruit	11 Roast Pork Mashed Potatoes Veggies	12 Cheese Pizza Fruit Cup	13 Early Dismissal 11:00 Cheeseburger French Fries Fruit	
	16 No School No E+	17 Orange Chicken Rice Veggies	18 Dry Mein Char Sui Chicken Fruit	19 Pepperoni Pizza Pineapple	20 FITNESS FEST Hot Dog on a Bun French Fries Fruit	21 Open House for new families for 2012-2013
	23 Chicken Katsu Rice Veggies Fruit	24 BBQ Chicken Mashed Potatoes Corn Fruit Cup	25 Bento Rice Teri Chicken Spam Corn Fruit	26 Cheese Pizza Applesauce	27 Kalua Pig Rice Veggies Fruit	28 Band Rummage Sale
	30 Chicken Katsu Fingers w/ dipping sauce Rice Fruit Cup	31 Chow Fun Teriyaki Meatballs Pineapple				

DEAR PARENTS: PLEASE HELP US SPREAD THE NEWS ABOUT OUR SCHOOL. SHARE THIS INVITATION WITH YOUR FAMILY AND FRIENDS WHO MIGHT LIKE TO LEARN ABOUT ELS!

Emmanuel Lutheran School's  
Kindergarten-8th grade  
*OPEN HOUSE*  
is coming soon!



For additional information,  
contact us at 873-6334  
or at [emmanuelmaui@yahoo.com](mailto:emmanuelmaui@yahoo.com)

Enrollment Packets  
will be available that day

*Non-Discrimination Policy*

*Emmanuel Lutheran School admits students of any sex, race, color, or national or ethnic origin to all the rights, privileges, programs, and activities generally accorded or made available to students at the school.*

**Saturday,  
January 21, 2012  
1:00-1:50 Information  
Meeting  
(in the church sanctuary)  
2:00-3:00  
Classrooms Open**

*Learn more about Emmanuel Lutheran School. Hear what other parents have to say about our school. Meet our staff. Have your questions answered. See our classrooms. Get to know us!*

**Emmanuel Lutheran School  
520 West One Street  
Kahului  
els-maui.org**



**EMMANUEL LUTHERAN SCHOOL**  
Tuition and Fees for 2012-2013

<b>Non-refundable <u>Registration Fee:</u></b>	<b>\$500</b>	(due with application or re-registration form)
<b><u>Testing Fee</u></b>	<b>\$ 40</b>	(for new students applying for enrollment)
<b><u>Band Fee</u></b>	<b>\$ 60</b>	(for students in grades 6-8 Band, due 08/01)

**Tuition for 2012-2013**

**KINDERGARTEN-GRADE 5: \$5,350**

**GRADES 6-8: \$6,300**

**PAYMENT PLAN OPTIONS:**

	<b><u>K-5</u></b>	<b><u>6-8</u></b>	
A. Monthly Payment Plan	\$535 x10	\$630 x10	<i>10 payments due monthly 08/01-05/01</i>
B. Semester Payment	\$2,625 x2	\$3,100 x2	<i>2 payments due 08/01 and 12/01 \$100 incentive reward</i>
C. Annual Payment	\$5,150 x1	\$6,100 x1	<i>1 payment due 08/01 \$200 incentive reward</i>

Family Discount: Second child – 10% reduction  
Additional children – 20% reduction

**After-School Care (E+)**

**Monthly Charges**

Full-time	5 days per week	\$120	annual: \$1,200
Part-time	3 days per week	\$ 80	annual: \$ 800
Part-time	2 days per week	\$ 55	annual: \$ 550

**Other E+ Charges**

Daily	(with call)	\$ 20	(without advance notice)	\$ 30
Early Dismissal Days	(with call)	\$ 30	(without advance notice)	\$ 40
Late Pick-up Fees	1-5 minutes	\$ 5	11-15 minutes	\$ 15
	6-10 minutes	\$ 10	16+ minutes	\$ 20

EMMANUEL LUTHERAN SCHOOL  
RE-ENROLLMENT APPLICATION  
2012-2013

FAMILY NAME (Please Print) \_\_\_\_\_

Ethnic Origin:  Asian  Hawaiian  Other Pacific Islander  White  African-American  Hispanic  Other  
(Optional: used for statistical and accreditation purposes only)

**THIS FORM MUST BE RETURNED BY FRIDAY, JANUARY 27, 2012,  
IN ORDER TO MAINTAIN PRIORITY STATUS.**

**For each child re-enrolling the \$500.00 non-refundable registration fee is due with this application.**

\_\_\_\_\_ Yes, our child/children will be re-enrolling in Emmanuel Lutheran School for the 2012-2013 school year.

Children to be *re-enrolled*

Grade in August

\_\_\_\_\_

\_\_\_\_\_

\_\_\_\_\_

\_\_\_\_\_

\_\_\_\_\_

\_\_\_\_\_

Siblings to be *enrolled* (new separate application required)

\_\_\_\_\_

\_\_\_\_\_

\_\_\_\_\_ No, our child/children will NOT be re-enrolling in Emmanuel.

AGREEMENT BY PARENT(S) OR GUARDIAN(S)

I agree to continue to support the religious instruction of my child by my own words and actions.  
I will continue to cooperate with the school in its program of Christian conduct, instruction, and worship experience.

I also agree to pay all fees and tuition according to the fee and tuition schedule for the 2012-2013 school year.

Admission to Emmanuel Lutheran School is contingent upon finishing the current school year in good standing spiritually, academically, behaviorally, and financially.

Print name of parent/guardian \_\_\_\_\_

Signature of parent/guardian \_\_\_\_\_ Date \_\_\_\_\_

EMMANUEL LUTHERAN SCHOOL  
RE-ENROLLMENT APPLICATION  
2012-2013

FAMILY NAME (Please Print) \_\_\_\_\_

Ethnic Origin:  Asian  Hawaiian  Other Pacific Islander  White  African-American  Hispanic  Other  
(Optional: used for statistical and accreditation purposes only)

**THIS FORM MUST BE RETURNED BY FRIDAY, JANUARY 27, 2012,  
IN ORDER TO MAINTAIN PRIORITY STATUS.**

**For each child re-enrolling the \$500.00 non-refundable registration fee is due with this application.**

\_\_\_\_\_ Yes, our child/children will be re-enrolling in Emmanuel Lutheran School for the 2012-2013 school year.

Children to be *re-enrolled*

Grade in August

\_\_\_\_\_

\_\_\_\_\_

\_\_\_\_\_

\_\_\_\_\_

Siblings to be *enrolled* (new separate application required)

\_\_\_\_\_

\_\_\_\_\_

\_\_\_\_\_ No, our child/children will NOT be re-enrolling in Emmanuel.

AGREEMENT BY PARENT(S) OR GUARDIAN(S)

I agree to continue to support the religious instruction of my child by my own words and actions. I will continue to cooperate with the school in its program of Christian conduct, instruction, and worship experience.

I also agree to pay all fees and tuition according to the fee and tuition schedule for the 2012-2013 school year.

Admission to Emmanuel Lutheran School is contingent upon finishing the current school year in good standing spiritually, academically, behaviorally, and financially.

Print name of parent/guardian \_\_\_\_\_

Signature of parent/guardian \_\_\_\_\_ Date \_\_\_\_\_

